



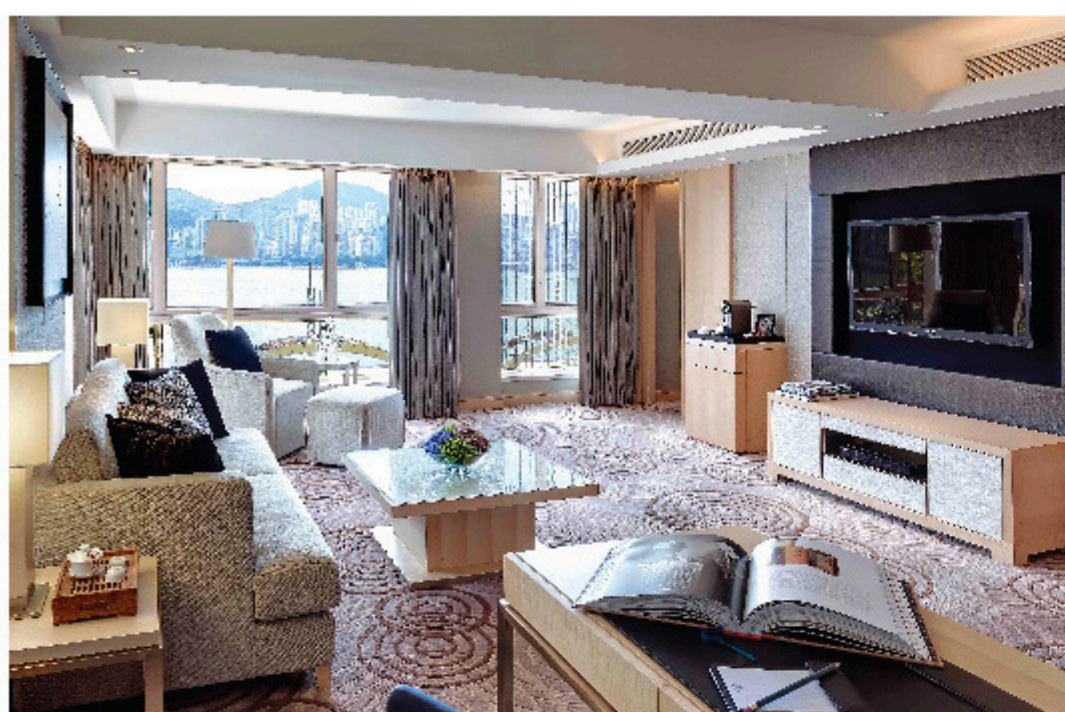
THE ROYAL GARDEN
帝苑酒店 *Tsim Sha Tsui*

69 Mody Road, Tsimshatshi East, Kowloon, Hong Kong

Tel: (852) 2733 2828 Fax: (852) 2311 2985

E-mail: rsvoff@rghk.com.hk

Website: www.rghk.com.hk



Location

- Central to the business and shopping areas of Tsimshatsui East district well served by Hong Kong's efficient public transport system
- Conveniently close to the MTR station and airport link services. Public transportation close at hand
- Walking distance to the area's most popular restaurants and entertainment venues

Accommodation

- 445 contemporary guest room, including 54 spacious and luxurious suites
- Room size from 28 sq. m - 104 sq. m
- 37"/ 46" Led TV in each guest room; 19" bathroom TV in suites
- Choices of International TV channels with pay movies
- High-speed Wi-Fi
- Coffee and tea making facilities
- Electronic safety box
- Duvet & Down pillows
- Hair dryer and complimentary bathroom amenities
- Smoking/Non-Smoking floor

Crown Club

- Business Services (12/F)
- Personalised check-in/check-out services
- Complimentary breakfast served in Greenery on 3/F
- Complimentary afternoon tea, evening cocktails and Hors d'oeuvres in Lounge

Facilities

- Spectacular views of Victoria Harbour at Sky Club (17/F):
- Gymnasium
- 25-meter underwater music heated pool
- Spa

Points of Interest

Total Attractions that we would like to include:

1. Clock Tower
2. Hong Kong Convention and Exhibition Centre
3. Hong Kong Cultural Centre
4. Hong Kong Heritage Discovery Centre
5. Hong Kong Museum of Art
6. Hong Kong Museum of History
7. Hong Kong Science Museum
8. K11 Art Mall and K11 MUSEA
9. Kowloon Park
10. Ocean Terminal and Harbour City
11. Western Kowloon Cultural District (M+)

Transportation

- Hong Kong International Airport: 40 mins
- Airport Express Rail - Kowloon Station: 8 mins
- Hotel to Star Ferry Pier: 6 mins
- MTR - Hotel to Tsim Sha Tsui Station: 5 mins
- MTR - Hotel to East Tsim Sha Tsui Station: 3 mins
- MTR - Tsim Sha Tsui East Station
 - Hong Kong West Kowloon Station: 8 mins
- MTR - Tsim Sha Tsui East Station
 - Exhibition Centre Station: 10 minutes



facebook.com/theroyalgarden.hk



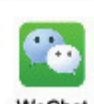
royalgardenhotel



The Royal Garden 香港帝苑酒店



weibo.com/rghk



hkroyalgarden



香港帝苑酒店





Weddings & Events

- 10 self-contained and purpose-built conference and banquet rooms
- Accommodating up to 260 guests for cocktails, 300 guests for banquet or 300 guests for meeting
- Equipped with audio visual and communications support



Dong Lai Shun

Founded in Beijing and renowned for authentic "Shuan Yang Rou". Huaiyang cuisines are also offered to widen your choices.



The Royal Garden Chinese Restaurant

This gourmet restaurant has won many awards and distinctions, it offers "home" cooked, seasonal Cantonese cuisine and daily fresh seafood



Shikigiku Japanese Restaurant (ifc mall & Kowloon branch)

Famous for its refined Japanese culinary art of tempura, teppanyaki, sushi and sashimi.



Le Soleil

Hong Kong branch of the popular award-winning San Francisco restaurant, it offers Vietnamese cuisine with a touch of Asian-fusion in a medley of tastes and flavors.



The Greenery

Offers "international" menu and buffet, casual dining in a garden-like setting, surrounded by the atrium's lush foliage and burbling water features.



Sabatini Ristorante Italiano (ifc mall & Kowloon branch)

Authentic yet creative Italian cuisine is prepared by our experienced chefs and is served in a picturesque "countryside" setting. It features seasonal specialties and is complimented by an extensive wine list.



Fine Foods Shop

A perfect spot for your discerning gourmet choices. It is designed to recreate the unique features of a French patisserie and offers a full range of delicacies.